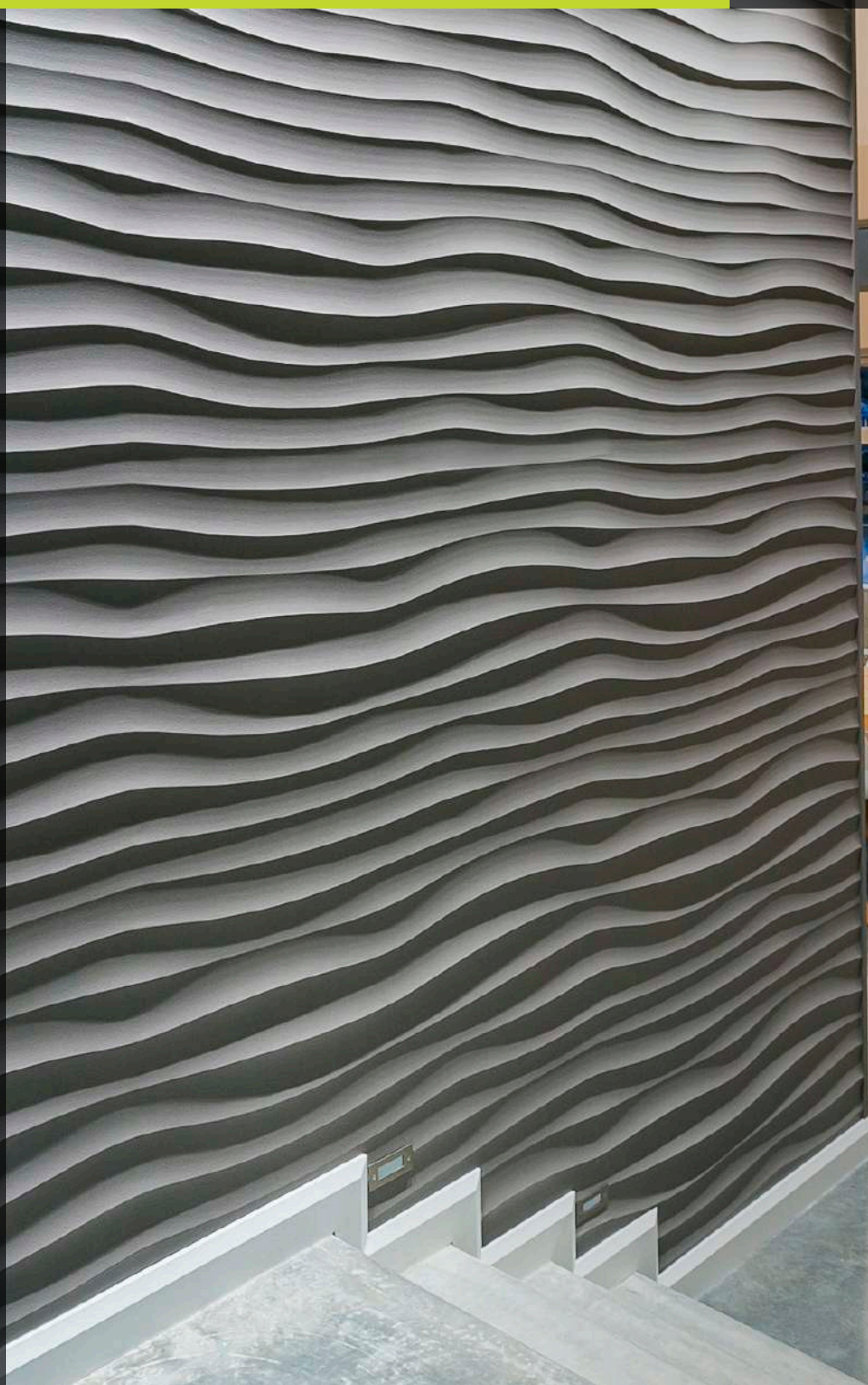


www.3dwallpanels.com.au

3D

3D Wall Panels

decorative panels for
interiors & landscapes



design inspired by nature

Transform your interiors or outdoor space with the stunning range of decorative 3D wall panels. All our designs are uniquely crafted, with inspiration drawn from nature.

A feature wall in 3D wall panels creates an architectural feel at a cost effective price. 3D wall panels deliver true texture to your walls, bar fronts, reception counters and any vertical surface in need of a WOW factor.

- **Base material:**

- Interior 18mm (or 25mm/32mm) single sided Australian made E0 moisture resistant MDF
- Exterior 18mm waterproof polymer

- **Finishes available:**

- Raw
- Undercoated and lightly sanded
- Spray painted in polyurethane in matt, satin, semi or high gloss finish.

- **Standard panel sizes:**

- 2400mm x 1200mm (interior and exterior material)
 - 2700mm x 1200mm (interior material only)
 - 3600mm x 1200mm (interior material only)
- which can be cut down to suit your needs.

- **Pattern Orientation:**

- Patterns can be oriented vertically or horizontally for greater design flexibility.

Be inspired by the many different combinations of designs and finishes available.

Proudly Australian made and delivered Australia wide.

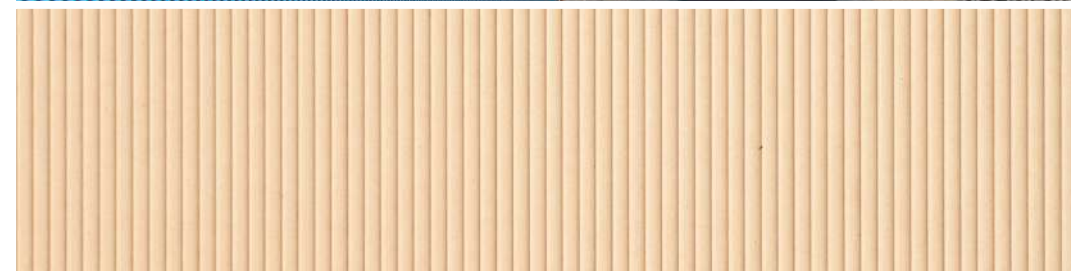
Order online at www.3dwallpanels.com.au.



Channels



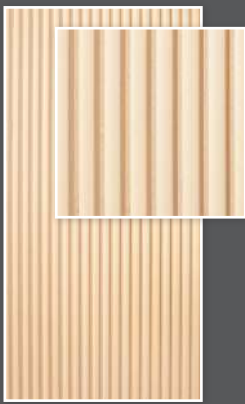
Dunes



design range inspired by nature



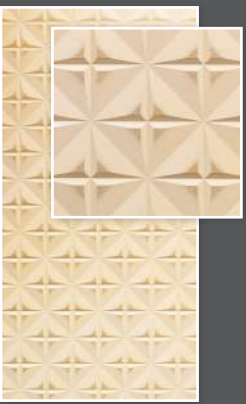
Arcs 30mm



Arcs 60mm



Arcs 120mm



Aspect



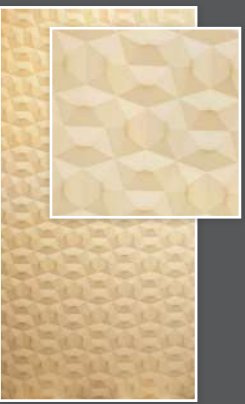
Barcode



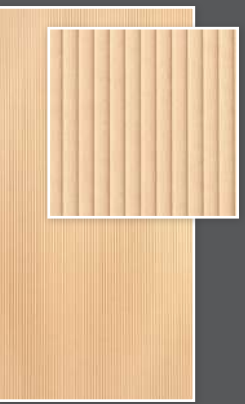
Batons



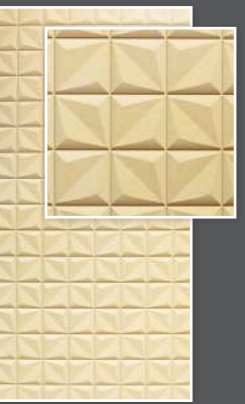
Braids



Cairo



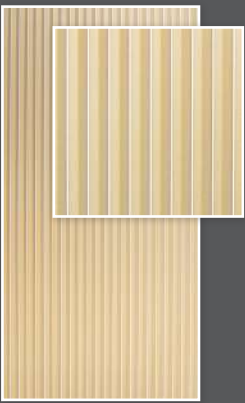
Channels



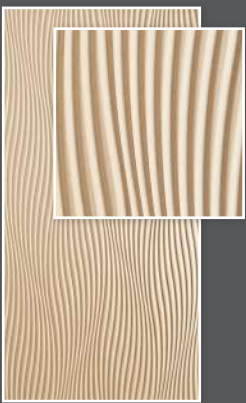
Chatterboxes



Circles Small
(available in large)



Concentina



Contours



Corrugated



Craters



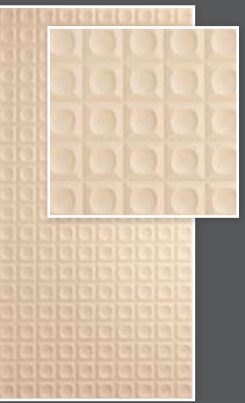
Cubes Large



Cubes Small



Diamonds Large
(available in small)



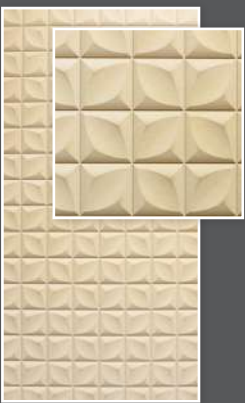
Dimples



Dunes



Facets



Florets



Flow



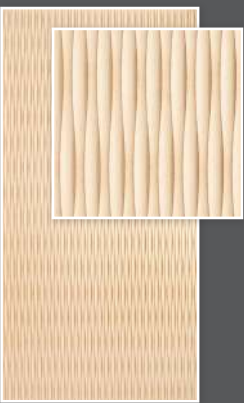
Illusions



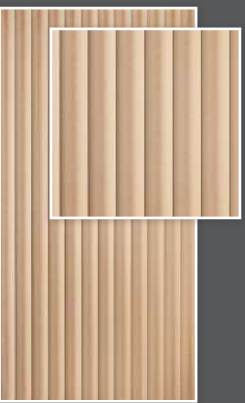
Impressions



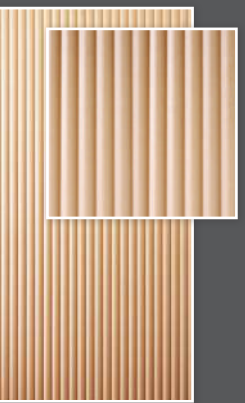
Honeycomb



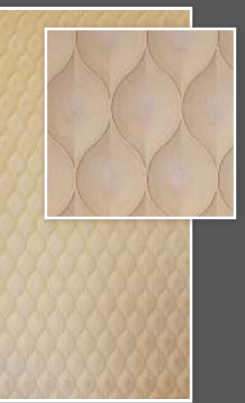
Hourglass



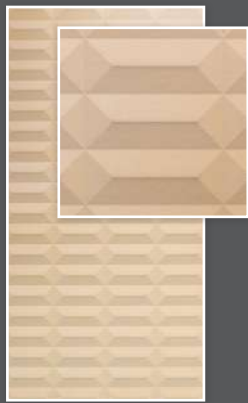
Logs 100mm



Logs 50mm
(available in 14mm)



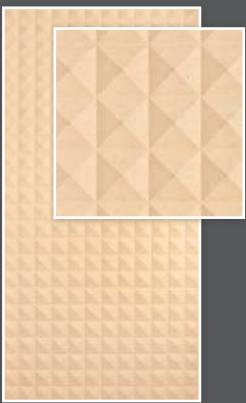
Marquise



Prisms



Puzzle



Pyramids



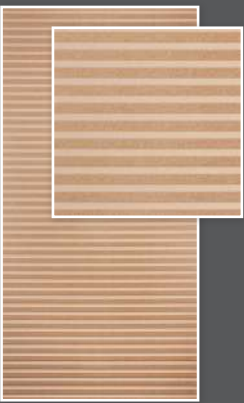
Reflections



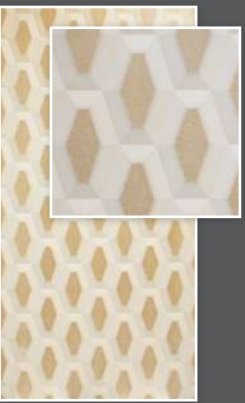
Ripples



Scallops Large
(available in small)



Slats



Stacks



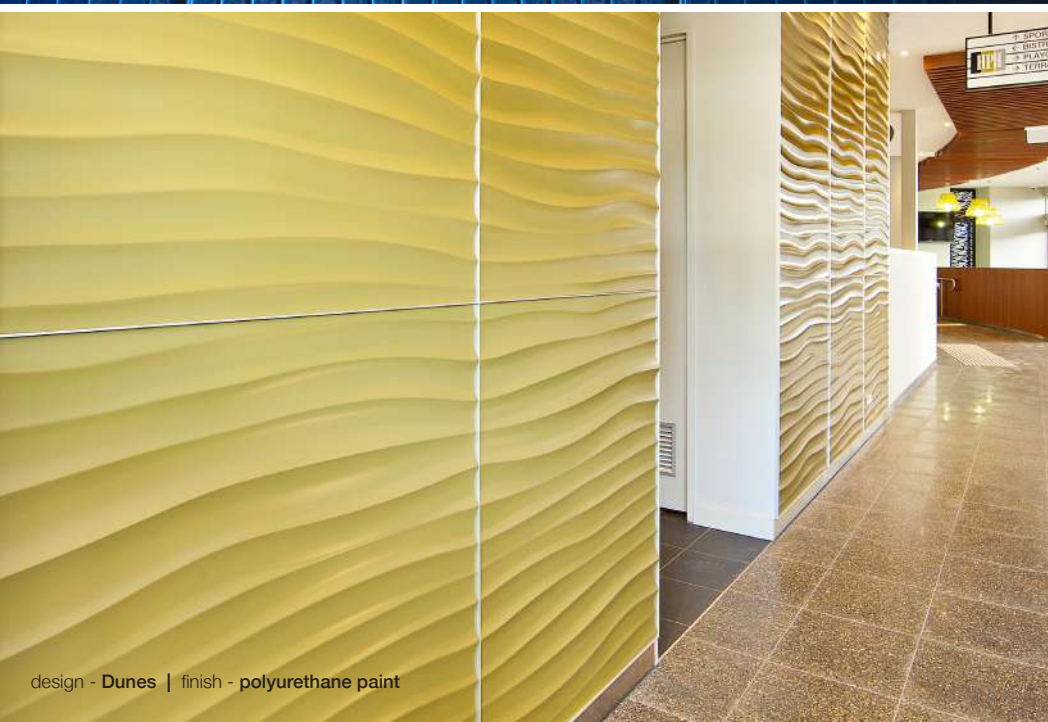
Stars



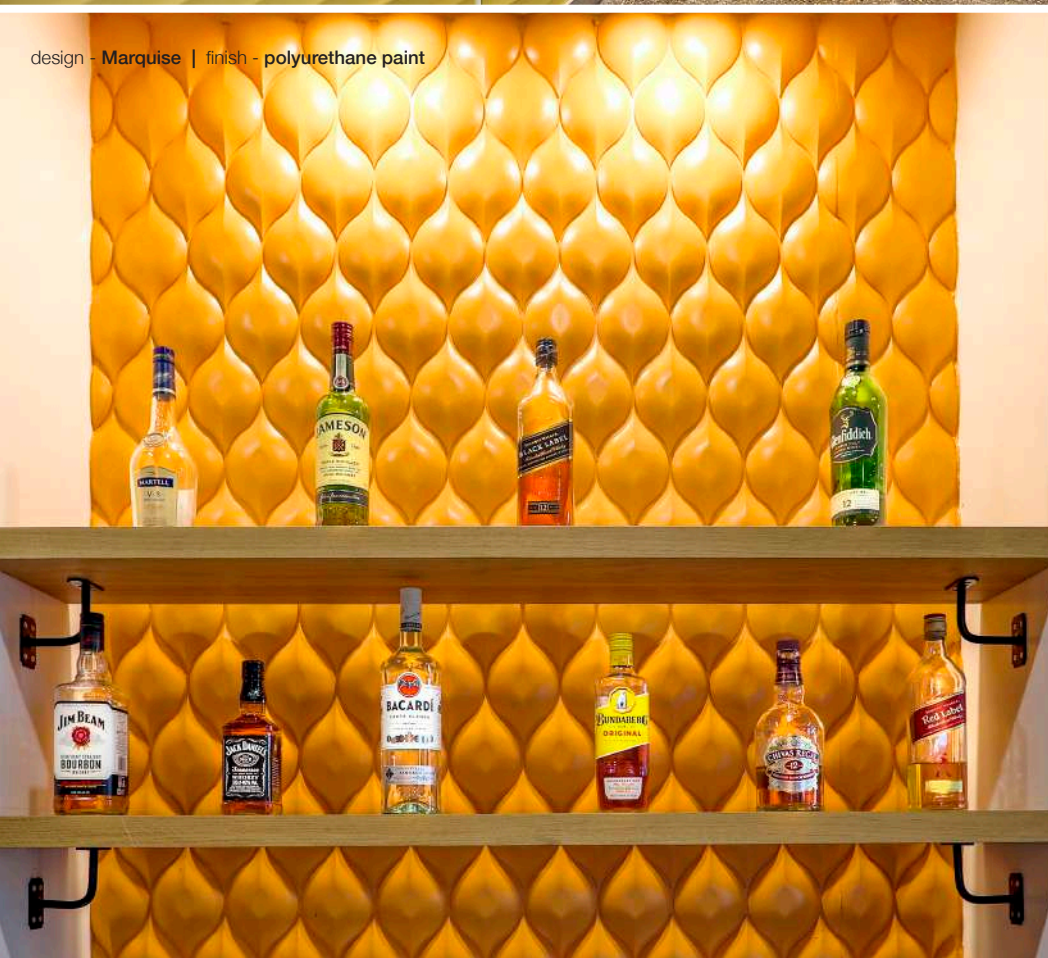
Waves



design - Arcs 120mm | finish - polyurethane paint



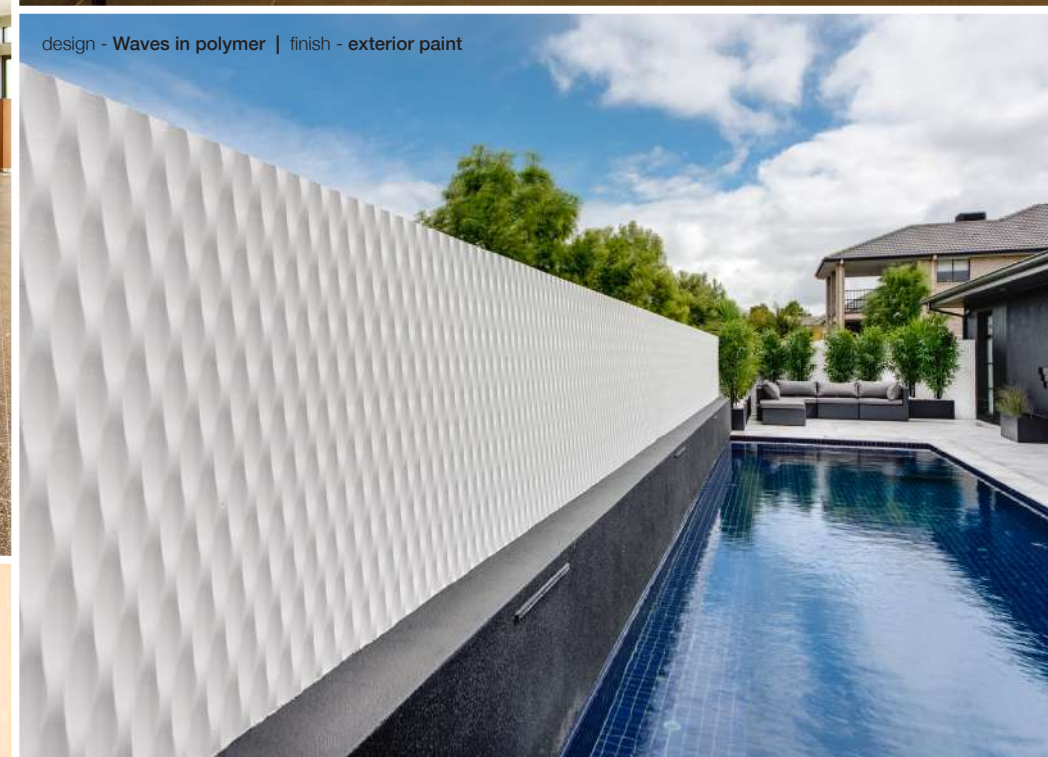
design - Dunes | finish - polyurethane paint



design - Marquise | finish - polyurethane paint



design - Stars | finish - polyurethane paint



design - Waves in polymer | finish - exterior paint



design - Ripples | finish - polyurethane paint



design - Pyramids | finish - polyurethane paint



3D Wall Panels

Alignment/Orientation

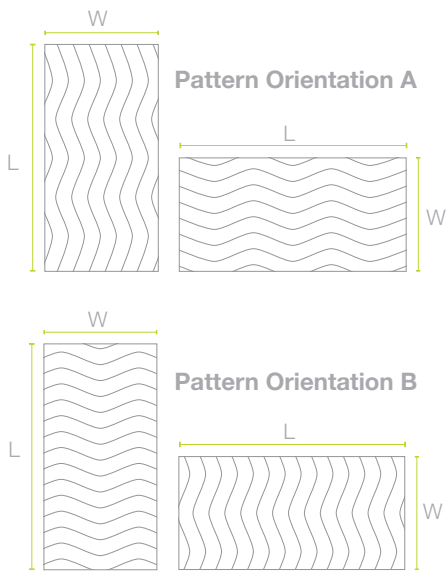
Pattern Matching

2400 x 1200mm panels can be pattern matched on all 4 sides. 2700 x 1200mm and 3600 x 1200mm panels pattern match on 2 long sides only.

Pattern Orientation

The flexibility of pattern orientation allows you to achieve the desired look in any project.
When ordering, specify pattern orientation **A** or **B**.

*Available Panel Sizes:
L 2400mm x W 1200mm or
L 2700mm x W 1200mm or
L 3600mm x W 1200mm

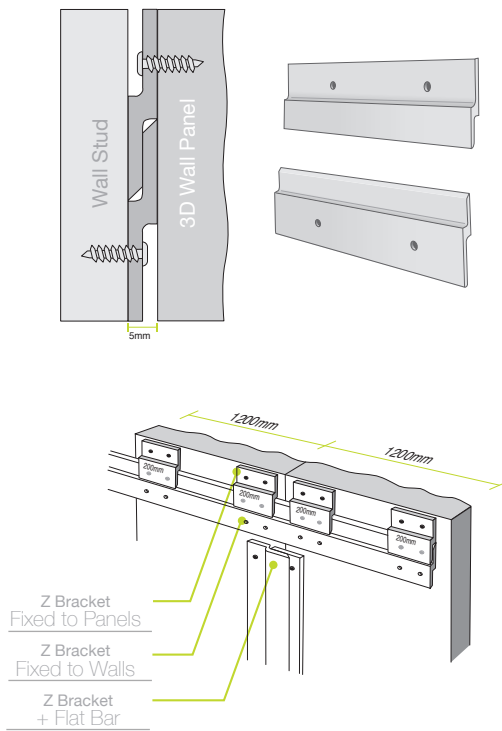


Installation Instructions

Finished Panels

Concealed installation

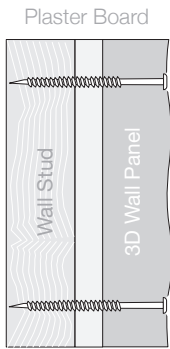
Z brackets provide a concealed method of fixing finished panels to walls and at just 5mm thick they offer a slimline solution. Z brackets and flat bars are available in 2mt lengths. See our Installation Guide for more details.



Raw Panels

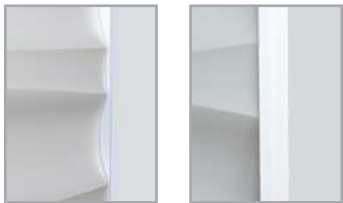
Easy installation

Raw panels can simply be screwed to the wall; ensuring there is adequate support by screwing into wall studs. Screw holes can then be puttied, sanded and painted over.



Panel Edge Finish

Exposed edges of panels may be capped with aluminium angle, cut to size as required.



T 02 9725 4222 F 02 9725 4777
80 Redfern Street, Wetherill Park NSW 2164
sales@3dwallpanels.com.au
www.3dwallpanels.com.au

Look us up on
social media



design - Reflections | finish - polyurethane paint



design - Arcs 60mm | finish - polyurethane paint